

The modular terminal block system - CLIPLINE complete

UT universal terminals - Screw connection terminal blocks

UKH ... feed-through high-current terminal blocks



The universal high-current terminal blocks cover the cross-section range from 16 - 240 mm².

A reliable cable connection is guaranteed by effective constructive measures. For example:

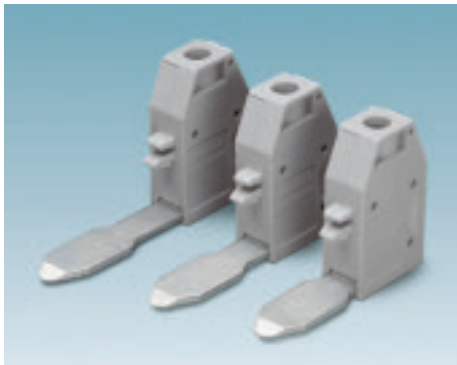
- Three-point centering of the wire in the prismatic sleeve base
- Low contact resistance of the contact surface due to ribbing
- Screws secured using spring-loaded elements

The terminal blocks have an enclosed half-shell insulation housing made of polyamide 6.6 and can be mounted on the NS 35 and NS 32 DIN rails in acc. with EN 60715.

For 16 - 95 mm², green-yellow ground terminal blocks are available. See page 35.

AGK 10 UKH...

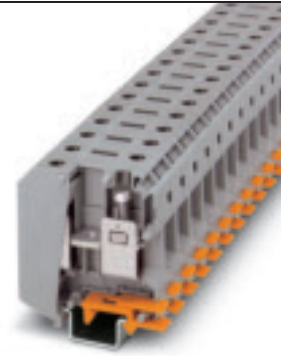
The fully insulated AGK 10 pick-off terminal blocks enable a voltage connection up to a nominal voltage of 1000 V (10 mm²) to be made with the high-current terminal blocks. All three versions can be labeled with the zack marker strip.



For more technical data, drawings and accessories, visit www.phoenixcontact.net/eshop.

1) For information on installation for using accessories for Ex e applications, see page 720.

2) See page 326.



UKH 50 ...

Ex:

 KEMA 98ATEX1786U / IECEx KEM 06.0029U

Dimensions		Width	Length	Height NS 35/15	
Dimensions	[mm]	20	70.5	83.5	
Dimensions		Width	Length	Height NS 32	
Dimensions	[mm]	20	70.5	81.5	
Max. electrical data					
I_{max} [A]		U_{max} [V]		Max. Ø [mm ²]	AWG
150		1000		16 - 70	6 - 2/0

Rated data	IEC 60947-7-1			
	IEC	UL / CUL	CSA	IEC/EN 60079-7
Rated voltage [V]	1000	600	600	690
Nominal current / cross-section [A] / [mm ²]	150 / 50	150 / -	150 / -	137 / 50 // 137 / 50
Rated cross-section [mm ²]	50	-	-	50
Cross-section range	6 - 2/0	6-1/0	6-1/0	6 - 1/0
Connection capacity		Ferrule		
		without / with plastic sleeve		
One conductor [mm ²]	16 - 70	25 - 70	25 - 50	25 - 50
Two conductors (of the same type) [mm ²]	10 - 16	10 - 16	10 - 16	-
Max. cross-section with insertion bridge [mm ²]				
General data				
Stripping length [mm]	24			
Screw thread	M6			
Tightening torque [Nm]	6 - 8			
Insulating material	PA			
Inflammability class acc. to UL 94	V0			

Ordering data

Description	No. of pos.	Color	Type	I_{max}	Order No.	Pcs. / Pkt.
Terminal block , for mounting on NS 32, NS 35/15 or NS 35/15-2.3		Gray	UKH 50		3009118	10
		Blue	UKH 50 BU		3009105	10

Accessories¹⁾

Pick-off terminal block , when wiring the pick-off with a smaller cross-section, observe the overload and short-circuit resistances specified in VDE 0100 part 430.	Gray	AGK 10-UKH 50	57 A	3001763	10	
Fixed bridge , for cross connections in the terminal center, screw heads with insulating collar, first remove partition plate						
	2	Silver	FBI 2-20	150 A	0201346	10
	3	Silver	FBI 3-20	150 A	0201317	10
Insertion bridge , fully insulated, is laid into terminal sleeve and snapped into the terminal housing						
	2	Gray				
	3	Gray				
Insertion profile , levels out the prism-shaped sleeve when using flat-ribbon conductors ²⁾		Silver	UKH 50 EP		3009228	10
End bracket , for end support of UKH 50 - UKH 240, is pushed onto DIN rail and fixed with 2 screws, made of aluminum, 10 mm wide, for assembly on NS 32...		Silver	E/AL-NS 32		1201659	10
Aluminum end clamp , for screwing on, for end support of 50 - 240 mm ² terminal blocks, can be labeled with ZB 10, for assembly on NS 35...		Silver	E/AL-NS 35		1201662	10
Allen wrench , fully insulated, in accordance with EN 60900						
Screwdriver			SZS 1,2X8,0		1205082	10
UniCard sheet , for labeling the lateral groove			UC-TM 10 (see page 480)			
Zack marker strip , for labeling the lateral groove			ZB 10 (see page 489)			

The modular terminal block system - CLIPLINE complete

UT universal terminals - Screw connection terminal blocks



UKH 95 ...



UKH 150 ...



UKH 240 ...



Ex: KEMA, CCA, IEC, UL, CE, etc.
KEMA 98ATEX1786U / IECEx KEM 06.0029U

Width	Length	Height NS 35/15	
25	83	97.5	
Width	Length	Height NS 32	
25	83	95.5	
I_{max} [A]	U_{max} [V]	Max. \varnothing [mm ²]	AWG
232	1000	25 - 95	4 - 3/0

IEC 60947-7-1			
IEC	UL / CUL	CSA	IEC/ EN 60079-7
1000	600	600	880
232 / 95	230 / -	200 / -	216 / 95 // 216 / 95
95	-	-	95
4 - 3/0	2-4/0	2-4/0	4 - 3/0
Solid	Stranded	Ferrule without / with plastic sleeve	
25 - 95	35 - 95	35 - 95	35 - 95
25 - 35	25 - 35	16 - 35	-
95	70		
33			
M8			
15 - 20			
PA			
V0			



Ex: KEMA, CCA, IEC, UL, CE, etc.
KEMA 99ATEX8332 U / IECEx KEM 06.0030U

Width	Length	Height NS 35/15	
31	100	118.5	
Width	Length	Height NS 32	
31	100	116	
I_{max} [A]	U_{max} [V]	Max. \varnothing [mm ²]	AWG
309	1000	35 - 150	2 - 300 kcmil

IEC 60947-7-1			
IEC	UL / CUL	CSA	IEC/ EN 60079-7
1000	600	600	1100
309 / -	285 / -	275 / -	256 / 150 // 256 / 150
150	-	-	150
2 - 300 kcmil	2-300	2-300	2 - 300
Solid	Stranded	Ferrule without / with plastic sleeve	
35 - 150	50 - 150	50 - 150	50 - 150
25 - 50	35 - 50	25 - 50	-
150	120		
40			
M10			
25 - 30			
PA			
V0			



Ex: KEMA, CCA, IEC, UL, CE, etc.
KEMA 99ATEX8332 U / IECEx KEM 06.0030U

Width	Length	Height NS 35/15	
36	100	131.5	
Width	Length	Height NS 32	
36	100	129.5	
I_{max} [A]	U_{max} [V]	Max. \varnothing [mm ²]	AWG
415	1000	70 - 240	2/0 - 500 kcmil

IEC 60947-7-1			
IEC	UL / CUL	CSA	IEC/ EN 60079-7
1000	600	600	1100
415 / 240	380 / -	400 / -	350 / 240 // 350 / 240
240	-	-	240
2/0 - 500 kcmil	2/0-500	1/0-500	2/0 - 500
Solid	Stranded	Ferrule without / with plastic sleeve	
70 - 240	70 - 240	70 - 185	50 - 185
35 - 95	50 - 95	35 - 50	-
240	185		
40			
M10			
25 - 30			
PA			
V0			

Type	I_{max}	Order No.	Pcs. / Pkt.
UKH 95		3010013	10
UKH 95 BU		3010136	10

Type	I_{max}	Order No.	Pcs. / Pkt.
UKH 150		3010110	10
UKH 150 BU		3010123	10

Type	I_{max}	Order No.	Pcs. / Pkt.
UKH 240		3010217	10
UKH 240 BU		0711852	10

AGK 10-UKH 95	57 A	3003541	10
---------------	------	---------	----

AGK 10-UKH 150/240	57 A	3003554	10
--------------------	------	---------	----

AGK 10-UKH 150/240	57 A	3003554	10
--------------------	------	---------	----

EB 2-25/UKH	232 A	0201362	10
EB 3-25/UKH	232 A	0201375	10
UKH 95 EP		3009231	10

EB 2-31/UKH	232 A	0201388	10
EB 3-31/UKH	232 A	0201391	10
UKH 150/240 EP		3009244	10

EB 2-36/UKH	320 A	0201401	10
EB 3-36/UKH	320 A	0201414	10
UKH 150/240 EP		3009244	10

E/AL-NS 32		1201659	10
------------	--	---------	----

E/AL-NS 32		1201659	10
------------	--	---------	----

E/AL-NS 32		1201659	10
------------	--	---------	----

E/AL-NS 35		1201662	10
------------	--	---------	----

E/AL-NS 35		1201662	10
------------	--	---------	----

E/AL-NS 35		1201662	10
------------	--	---------	----

VDE-ISS 6		1201934	1
-----------	--	---------	---

VDE-ISS 8		1201947	1
-----------	--	---------	---

VDE-ISS 8		1201947	1
-----------	--	---------	---

UC-TM 10 (see page 480)			
-------------------------	--	--	--

UC-TM 10 (see page 480)			
-------------------------	--	--	--

UC-TM 10 (see page 480)			
-------------------------	--	--	--

ZB 10 (see page 489)			
----------------------	--	--	--

ZB 10 (see page 489)			
----------------------	--	--	--

ZB 10 (see page 489)			
----------------------	--	--	--